

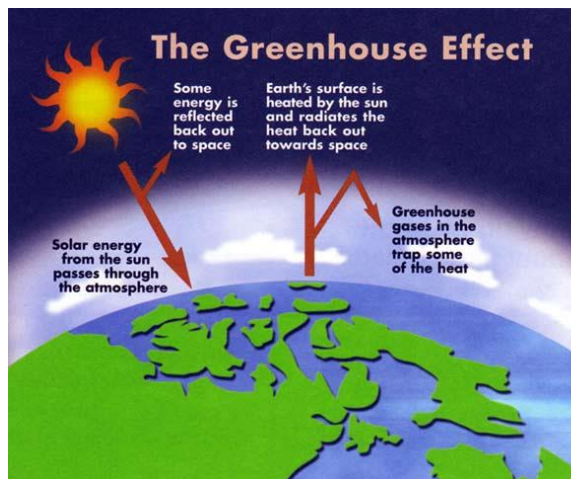
Global Warming and Thinning of Ozone Layer

Effects of Global Warming

- Polar caps melt
- Lower lying areas flooded
- Tropical disease spreads
- Droughts occur

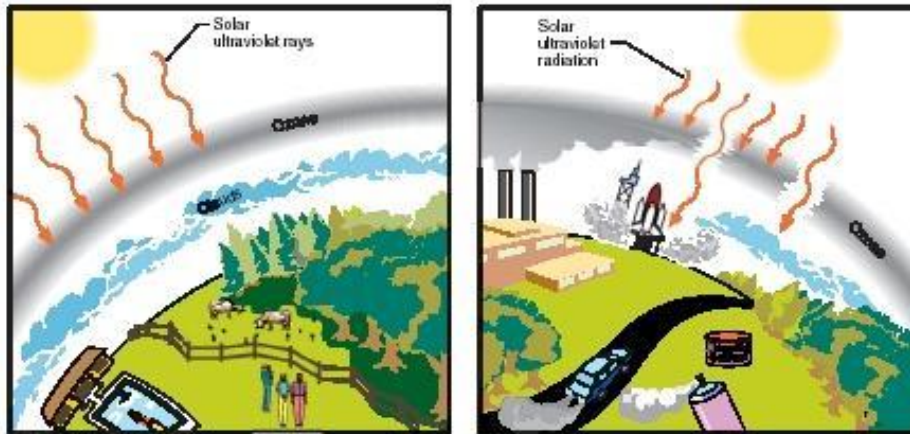
Control of Global Warming

- Practice reforestation
- Prevent forest fires
- Control emission of gasses

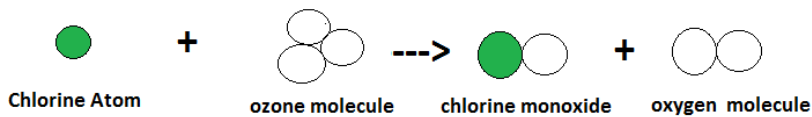


Emission of carbon dioxide trap the heat from escaping to the space. Heat is trapped will cause increase of temperature on earth

Thinning of Ozone Layer



Thinning of ozone layer is due to the usage of CFC.



Adverse effects of thinning of ozone layer

- a) Cataract
- b) Skin Cancer
- c) Lower body resistance
- d) Damage crops and resulting on low yield

Industrial Discharge

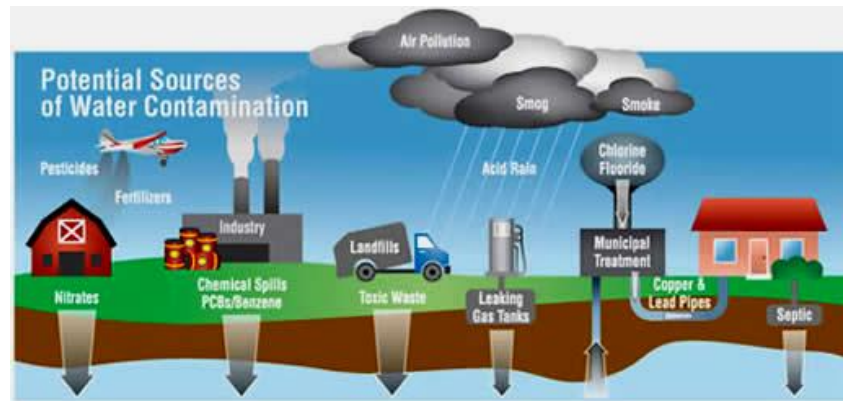


Diagram above shows the industrial discharge

Air Pollution

Contributed by Factories and vehicles

Excessive usage of fossil fuel contributed to the air pollution. The product of fossil fuel are

1. Carbon Dioxide
2. Carbon Monoxide
3. Sulphur Dioxide
4. Nitrogen Dioxide

NOTE: ALL THE GASSES ABOVE CONTRIBUTED TO ACIDIC RAIN TOO!!!!

Water Pollution

Discharge of toxic waste from factories such as mercury. Discharge of toxic chemicals such as fungicides, insecticides and fertilizer dissolves into the river and pollute the water

Pollutant	Harmful Effects
Lead (Pb)	Cause high blood pressure and nervous disorders
Mercury (Hg)	Destroys the nervous system Cause deformity in fetus Leading to Minamata diseases
Chromium (Cr)	Cause adverse effects if it accumulate too much in kidneys, brain, liver and bones.
Carbon monoxide (CO)	Depriving oxygen from our body
Sulphur dioxide (SO ₂)	Irritate and corrode human's respiratory system Cause coughs, asthma and bronchitis
Nitrogen dioxide (NO ₂)	"
Smoke	Cause lung cancer
Sewage	Cause water borne disease such as typhoid, cholera and dysentery
Radioactive waste	Cause sterility Cause deformity in fetus Cause cancer, even worse death
Noise	Lead to the total deafness and nervous disorders

- Destruction of Habitats

Pollutant	Harmful Effects
Acid rain	Corrodes the mineral in the soil, making the soil is unsuitable habitat for plants. Cause the roots of plants to be unable to absorb water.
Oil spills	Pollute the natural water resources like sea, river and lake When oil spills is washed to the shore, it makes the coast line as uninhabitable place for marine organisms